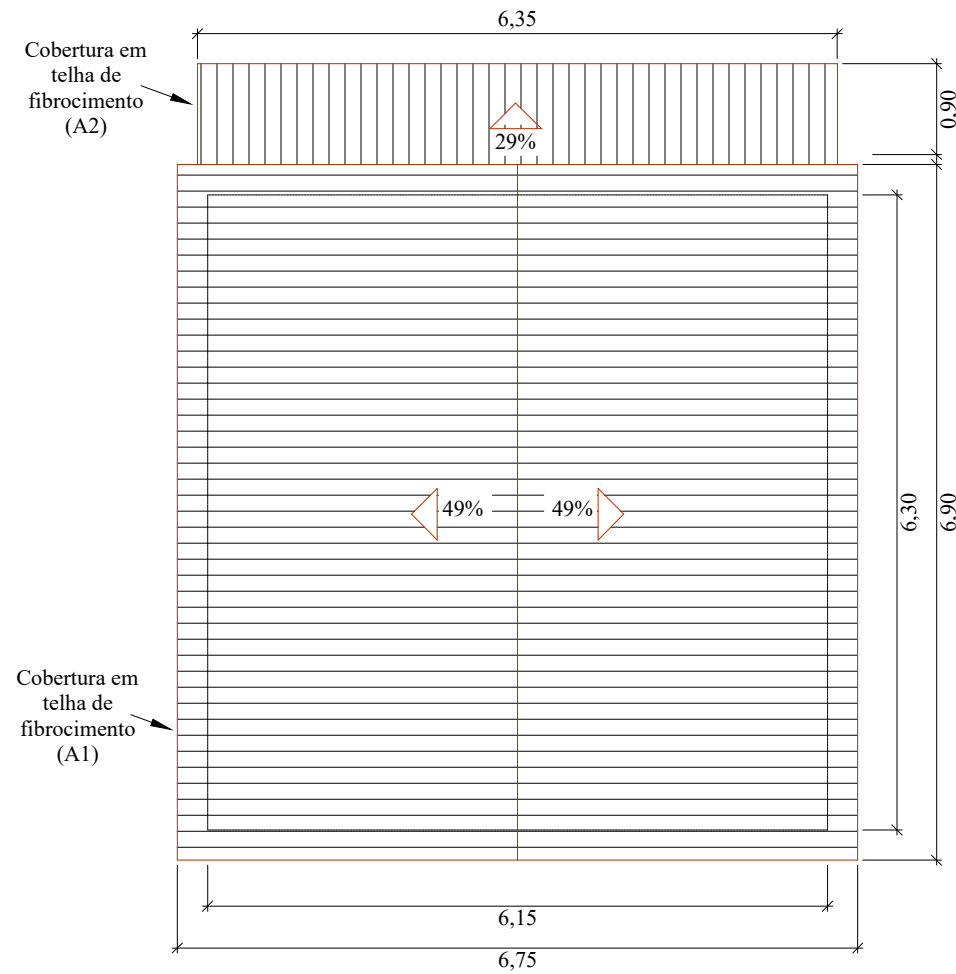
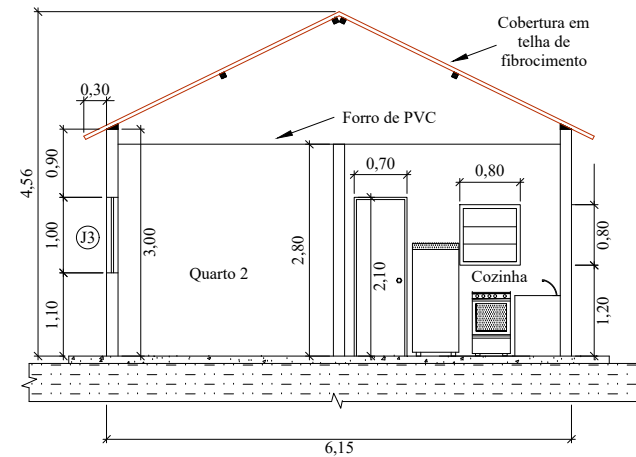


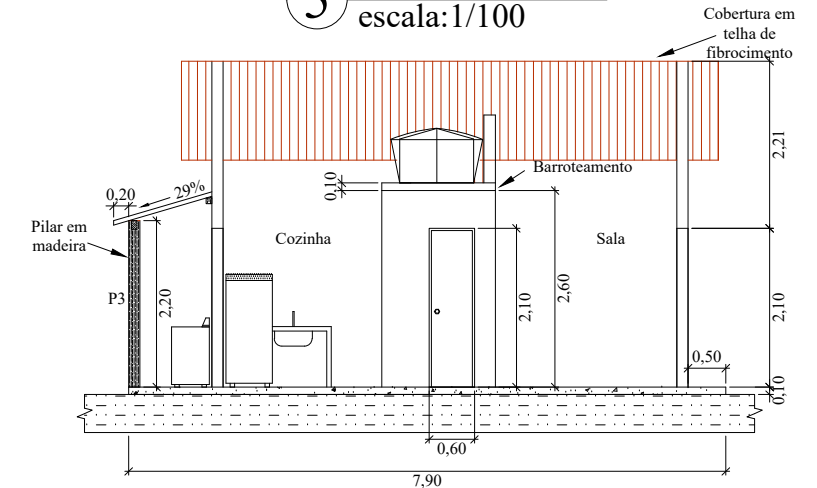
3 Telhado
escala: 1/75



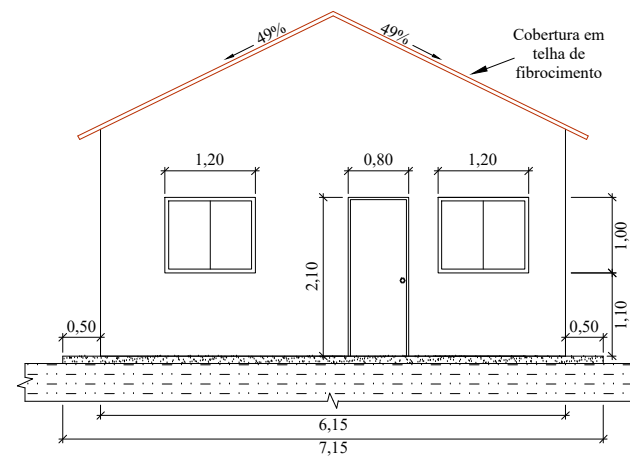
4 Corte B-B
escala: 1/100



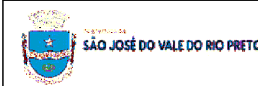
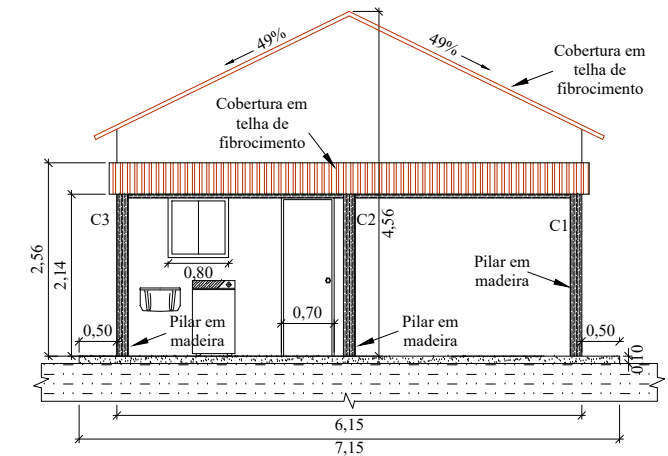
5 Corte A-A
escala: 1/100



6 Fachada
escala: 1/100



7 Fachada
escala: 1/100



PROJETO BÁSICO - PROJETO DE CASAS POPULARES
São José do Vale do Rio Preto - RJ

Secretaria de Planejamento e Gestão

ESCALA:
INDICADA

PRANCHA:
02/03

DATA:
Maio/2022